

# February 2019 Newsletter



## Important Dates

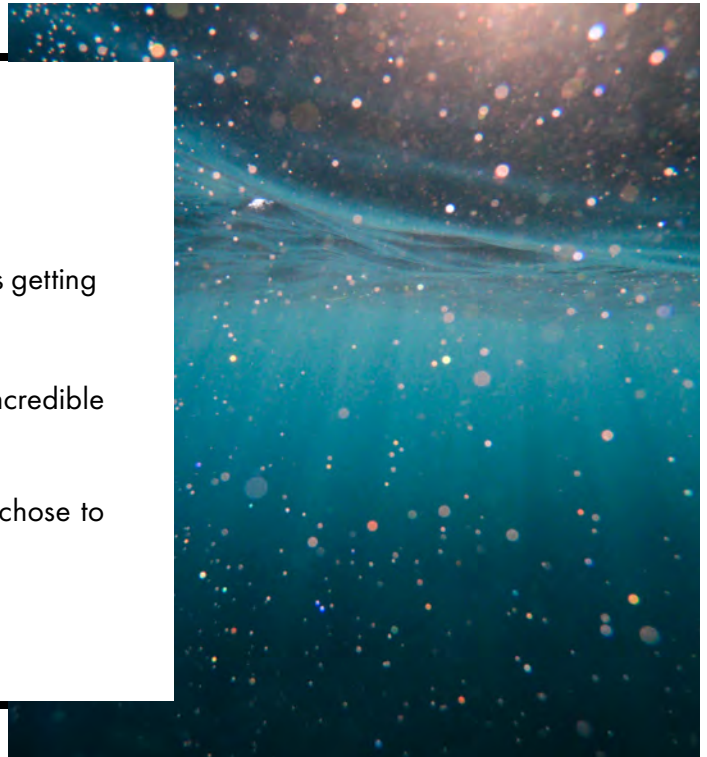
- |             |                               |
|-------------|-------------------------------|
| Feb 13 + 14 | <b>PINK DAY</b>               |
| Feb 15      | No School - Staff Retreat     |
| Feb 18      | <b>FAMILY DAY</b> - No School |
| March 1     | <b>PRO D DAY</b> - No School  |

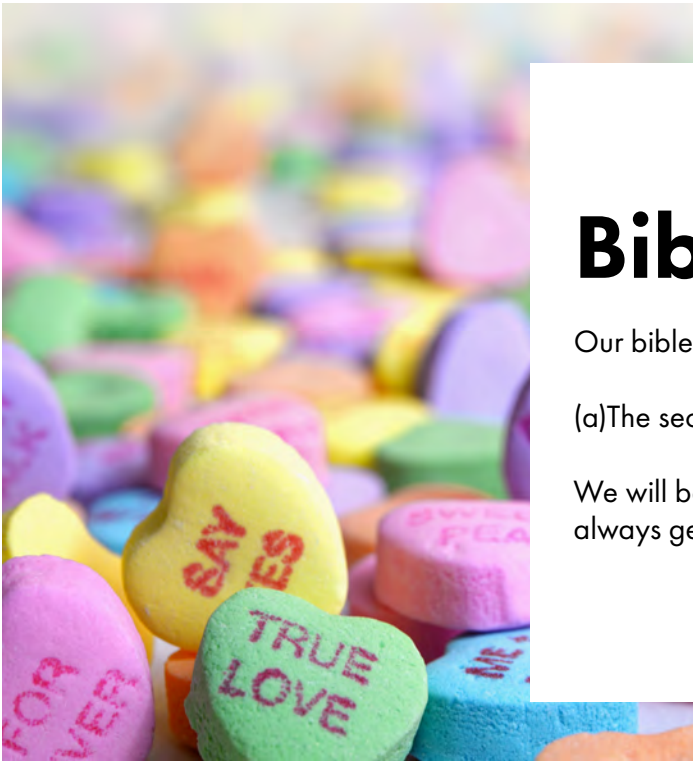
Heads up, Spring Break is March 18th to the 29th.

**February** is a happy month with the days getting noticeably longer and the weather, slightly warmer.

We will be "**DIVING INTO THE SEA**" and exploring the incredible water world.

We will also be looking at the story of **JONAH** and how he chose to follow God.





## Bible Verse

Our bible verse this month is **Mark 12:31**

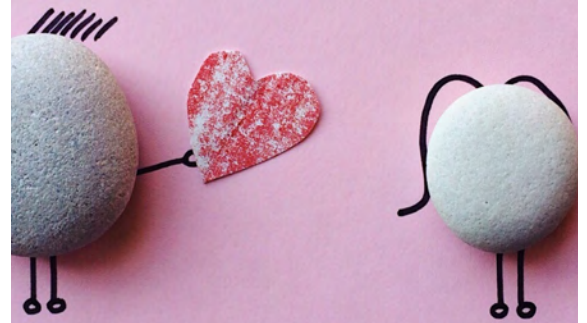
(a)The second is this: '**LOVE YOUR NEIGHBOR AS YOURSELF.**'

We will be investigating why Jesus asked us to do this and how we will not always get along with everyone but we must always be kind.

## Items Needed

One small rock at least two inches round that we can paint (we only need one for each child). If your child would like to keep the specific rock they bring in please put their name on it with some masking tape, otherwise the rocks will be put into a bucket and they will choose from there.

For **VALENTINE'S DAY** each child will have a bag for mail. If you choose to bring valentines in for the class, please ensure that everyone gets one. Also refrain from addressing names on the cards because drop off becomes much longer and too busy.



*equipping students  
transforming lives*